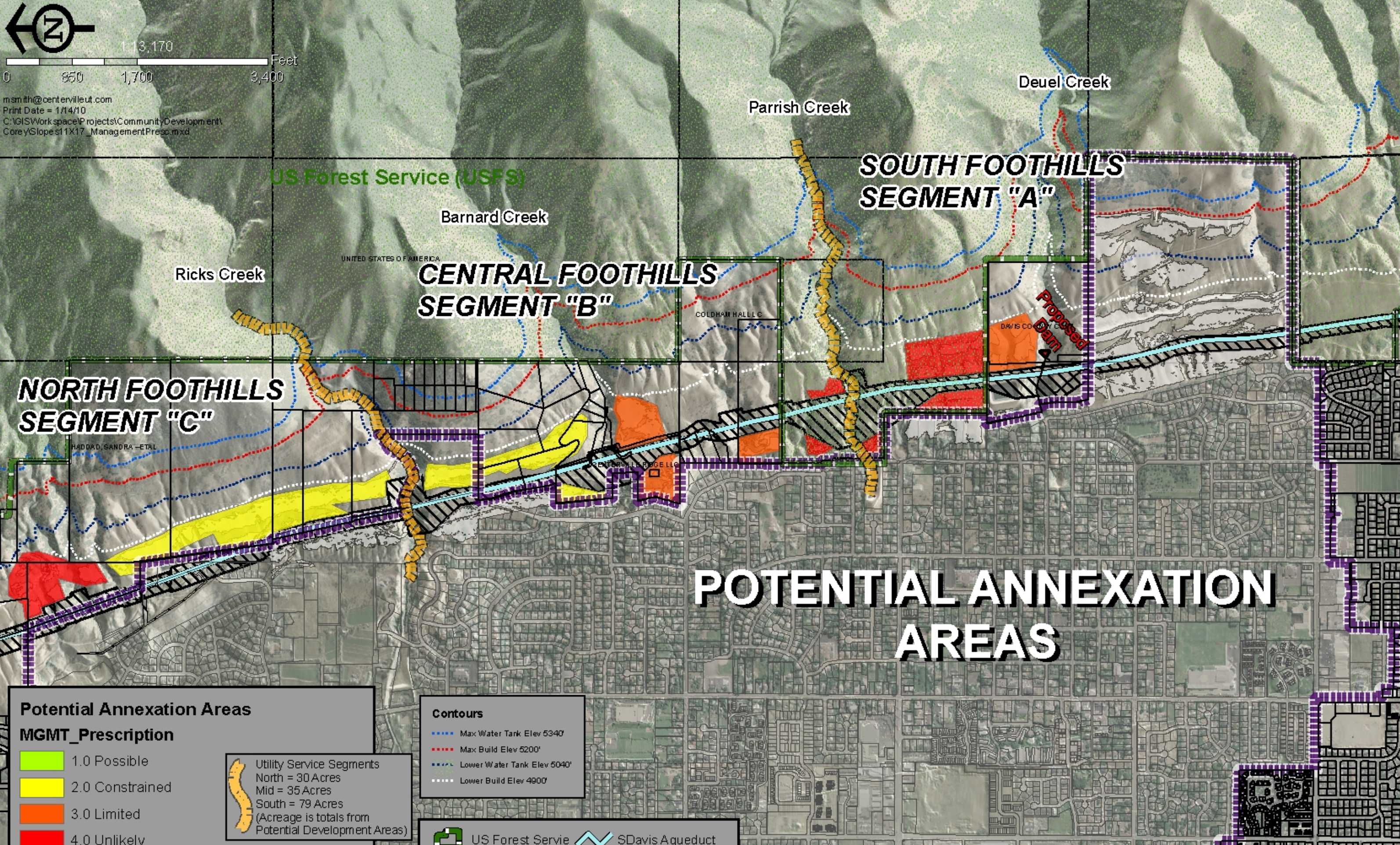


m.sm.ith@centervilleut.com  
 Print Date = 1/14/10  
 C:\GIS\workspace\Projects\CommunityDevelopment\ Corey\Slopes11X17\_ManagementPresc.mxd



**Potential Annexation Areas**

**MGMT\_Prescription**

- 1.0 Possible
- 2.0 Constrained
- 3.0 Limited
- 4.0 Unlikely
- Slope <=30% with Clustered Area > 0.5 Acres

**Utility Service Segments**  
 North = 30 Acres  
 Mid = 35 Acres  
 South = 79 Acres  
 (Acreage is totals from Potential Development Areas)

**Contours**

- Max Water Tank Elev 5340'
- Max Build Elev 5200'
- Lower Water Tank Elev 5040'
- Lower Build Elev 4900'

- US Forest Service
- SDavis Aqueduct
- City Boundary
- Weber Basin ROW

# POTENTIAL ANNEXATION AREAS