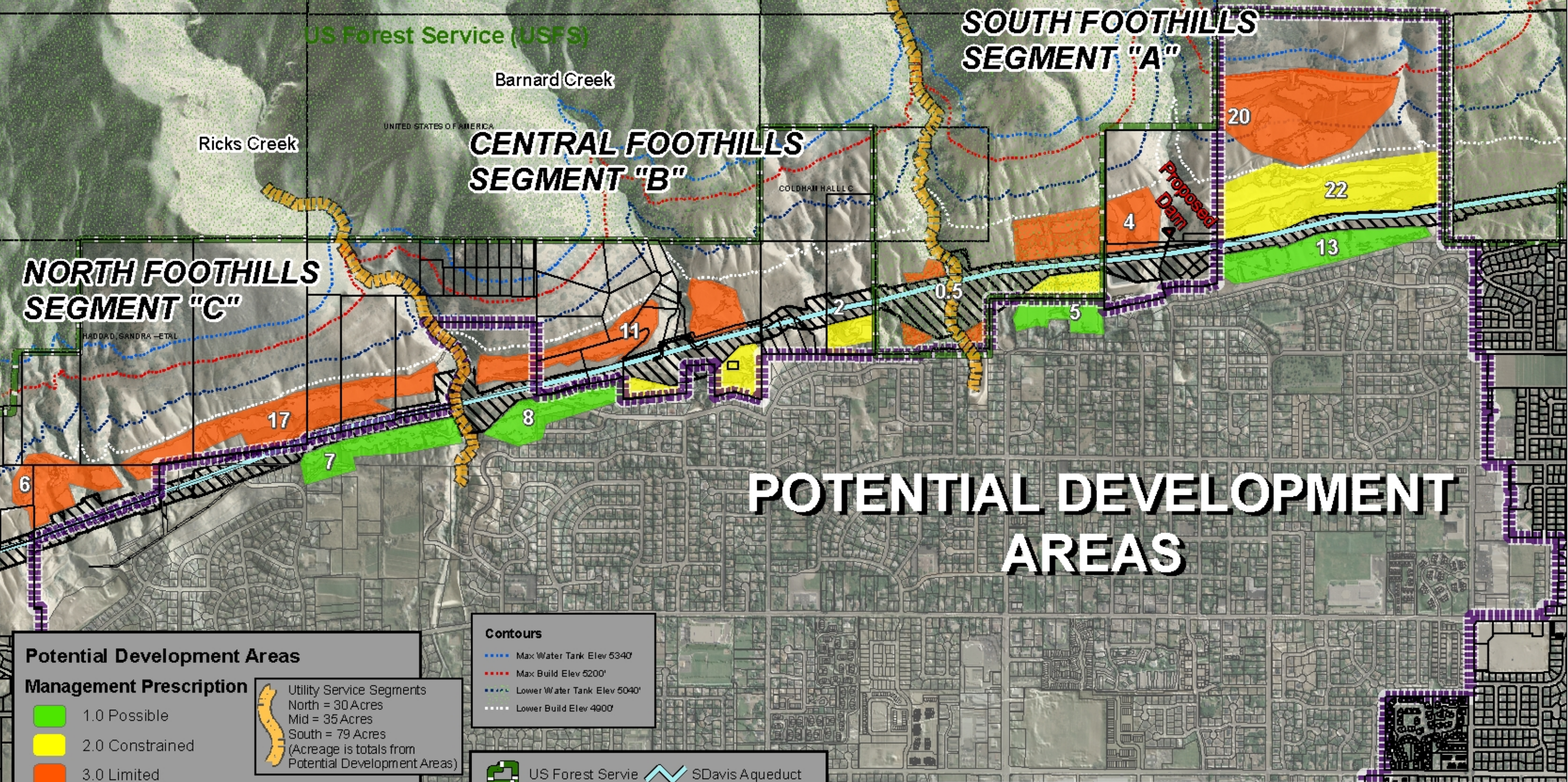


m.smith@centervilleut.com
 Print Date = 1/14/10
 C:\GIS\workspace\Projects\CommunityDevelopment\ Corey\Slopes11X17_ManagementPresc.mxd



POTENTIAL DEVELOPMENT AREAS

Potential Development Areas Management Prescription

- 1.0 Possible
- 2.0 Constrained
- 3.0 Limited
- Slope $\leq 30\%$ with Clustered Area > 0.5 Acres

Utility Service Segments
 North = 30 Acres
 Mid = 35 Acres
 South = 79 Acres
 (Acreage is totals from Potential Development Areas)

Contours

- Max Water Tank Elev 5340'
- Max Build Elev 5200'
- Lower Water Tank Elev 5040'
- Lower Build Elev 4900'

- US Forest Service
- City Boundary
- SDavis Aqueduct
- Weber Basin ROW